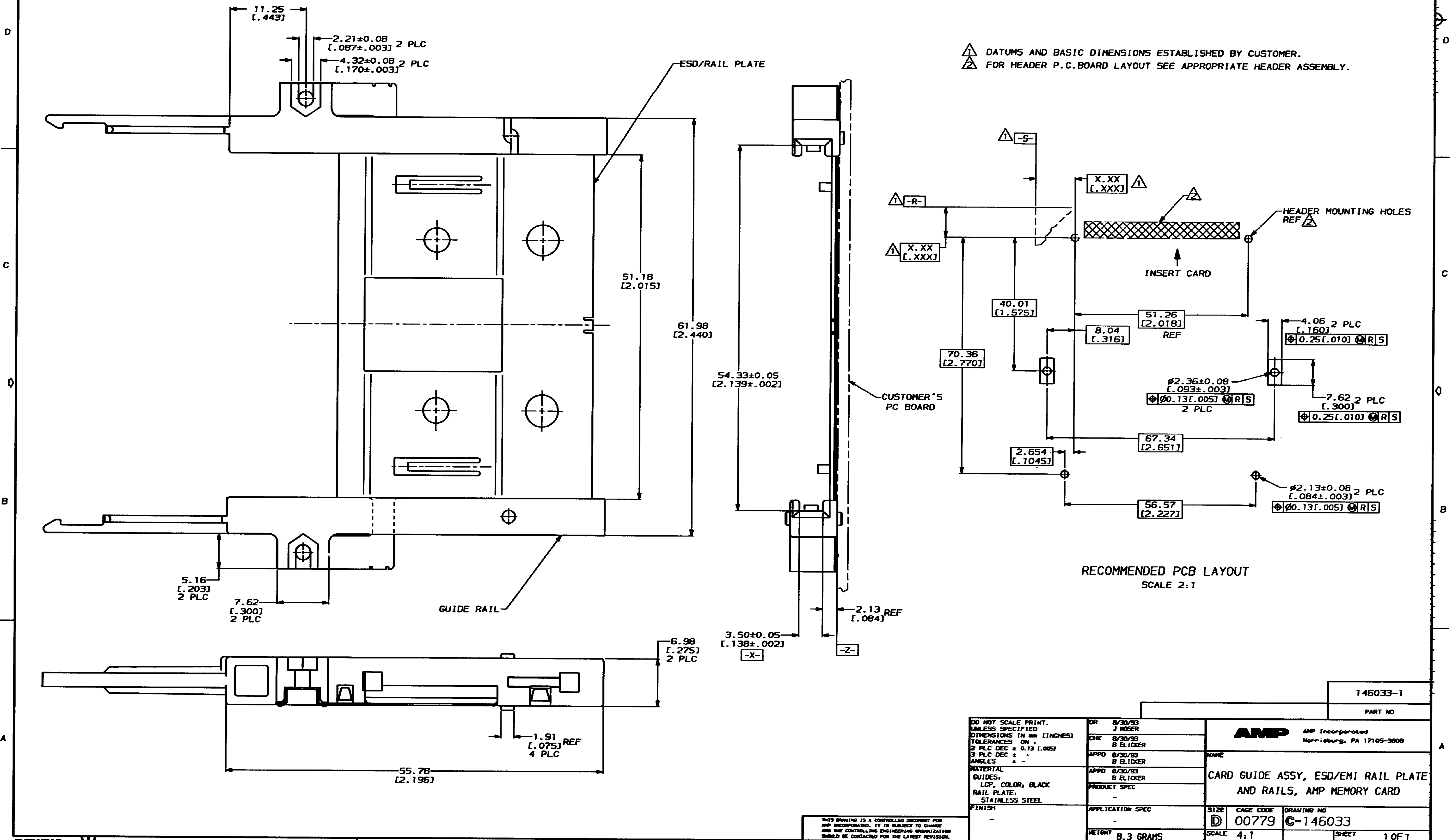


REVOLUTION		LTR		REVISIONS		DATE	APPD
AD	39			0	RELEASED PER PPR	8/30/93	BE



△ DATUMS AND BASIC DIMENSIONS ESTABLISHED BY CUSTOMER.  
 △ FOR HEADER P.C.BOARD LAYOUT SEE APPROPRIATE HEADER ASSEMBLY.

RECOMMENDED PCB LAYOUT  
SCALE 2:1

146033-1  
PART NO

DO NOT SCALE PRINT. UNLESS SPECIFIED DIMENSIONS IN mm (INCHES) TOLERANCES ON + 2 PLC DEC ± 0.13 (L.005) 3 PLC DEC ± - ANGLES ± -	DR 8/30/93 J MOSER	AMP AMP Incorporated Harrisburg, PA 17105-3608	NAME
MATERIAL: GUIDES: LCP, COLOR, BLACK RAIL PLATE: STAINLESS STEEL FINISH: -	CHK 8/30/93 B ELICKER		APPD 8/30/93 B ELICKER
THIS DRAWING IS A CONTROLLED DOCUMENT FOR AMP INCORPORATED. IT IS SUBJECT TO CHANGE AND THE CONTROLLING ENGINEERING ORGANIZATION SHOULD BE CONTACTED FOR THE LATEST REVISION.	APPD 8/30/93 B ELICKER	PRODUCT SPEC	APPLICATION SPEC
	WEIGHT 8.3 GRAMS	SCALE 4:1	SIZE CAGE CODE 00779 DRAWING NO C-146033
			SHEET 1 OF 1

CUSTOMER DRAWING